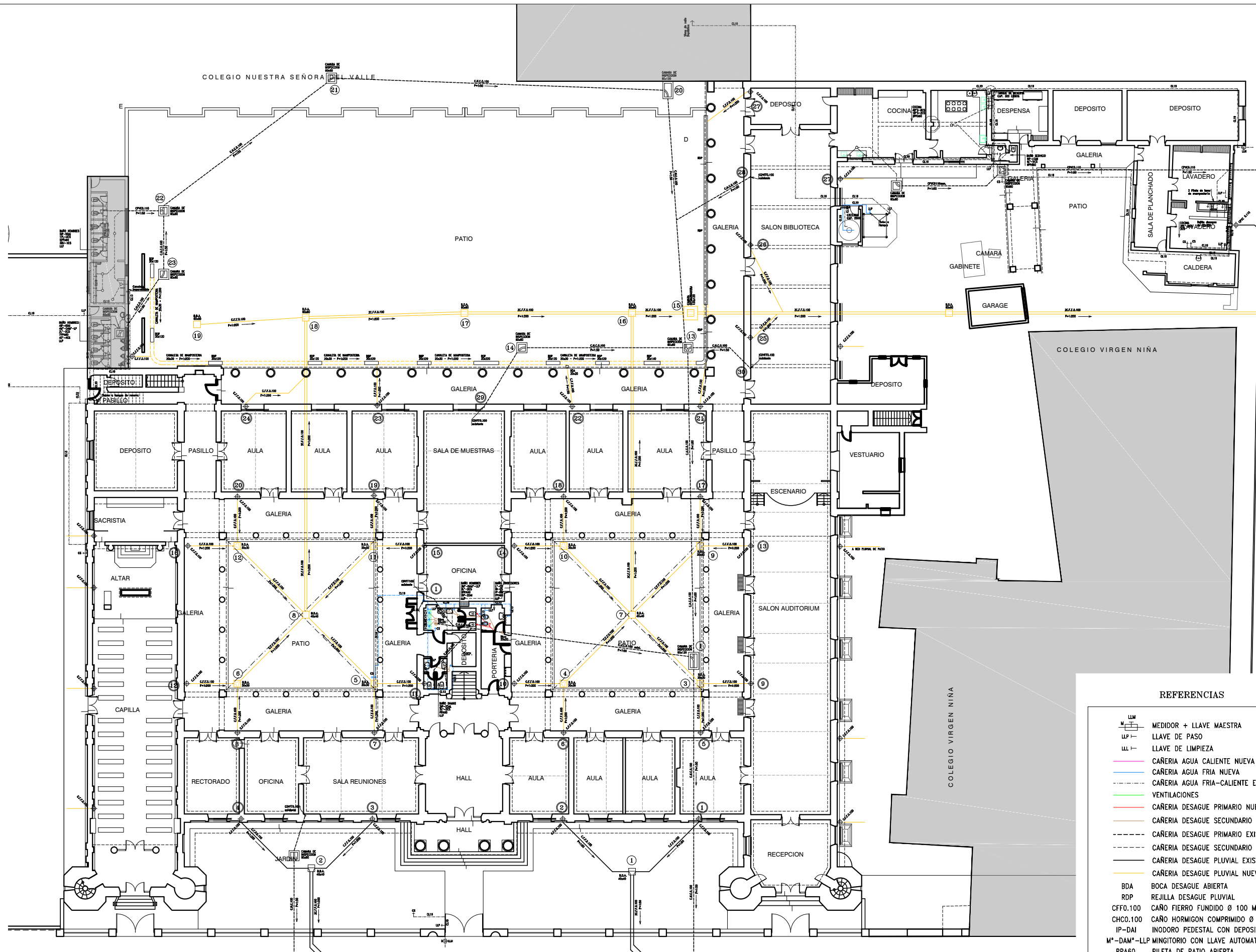
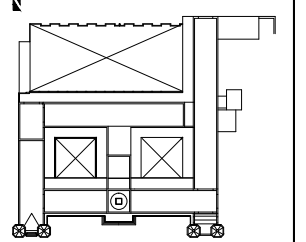


ELECTRICIDAD - PLANTA ALTA



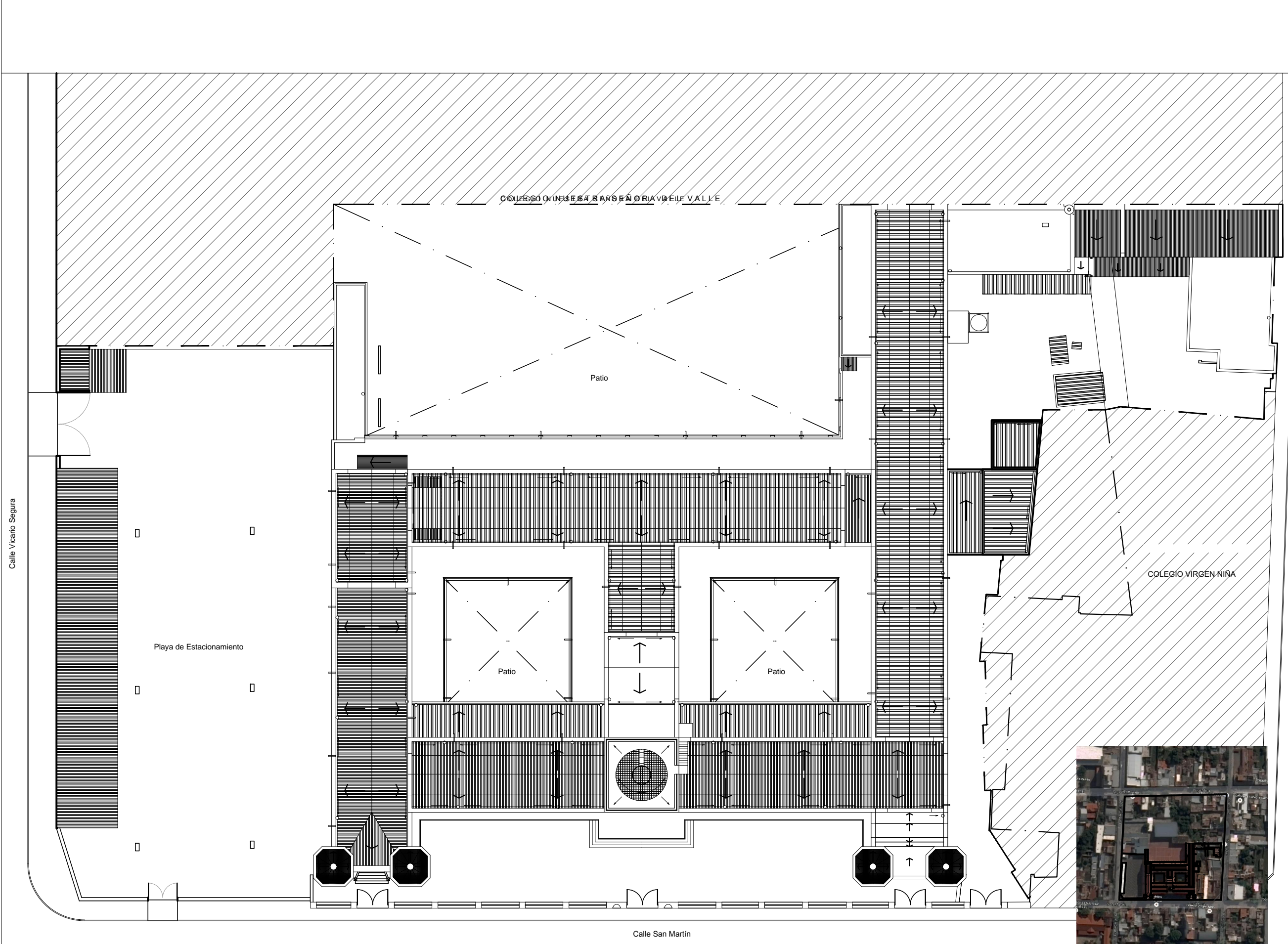
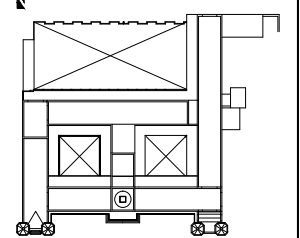
CALLE SAN MARTIN
INSTALACION DE AGUA, DESAGUE CLOACAL Y PLUVIAL - PLANTA BAJA

REFERENCIAS

- MEDIDOR + LLAVE MAESTRA
- LLAVE DE PASO
- LLAVE DE LIMPIEZA
- CAÑERIA AGUA CALIENTE NUEVA
- CAÑERIA AGUA FRIA NUEVA
- CAÑERIA AGUA FRIA-CALIENTE EXISTENTE
- VENTILACIONES
- CAÑERIA DESAGUE PRIMARIO NUEVA
- CAÑERIA DESAGUE SECUNDARIO NUEVA
- CAÑERIA DESAGUE PRIMARIO EXISTENTE
- CAÑERIA DESAGUE SECUNDARIO EXISTENTE
- CAÑERIA DESAGUE PLUVIAL EXISTENTE
- CAÑERIA DESAGUE PLUVIAL NUEVO
- BDA BOCA DESAGUE ABIERTA
- RDP REJILLA DESAGUE PLUVIAL
- CFF0.100 CAÑO FIERRO FUNDIDO Ø 100 MM.
- CHC0.100 CAÑO HORMIGON COMPRIMIDO Ø 100 MM.
- IP-DAI INODORO PEDESTAL CON DEPOSITO
- M*-DAM*-LLP MINGITORIO CON LLAVE AUTOMATICA
- PPA60 PILETA DE PATIO ABIERTA
- B*R BACHA REDONDA
- LLP LLAVE DE PASO
- CS CANILLA SIMPLE
- D* DUCHA
- L* LAVATORIO
- Bt BIDE

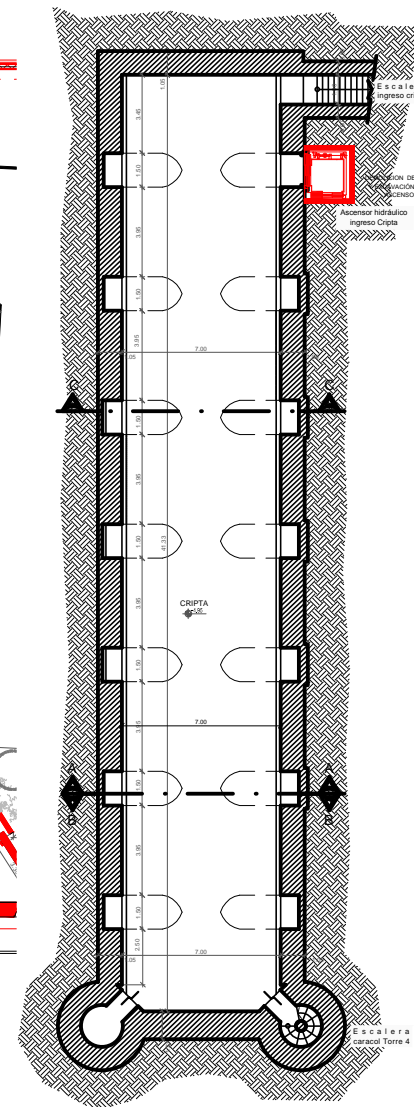
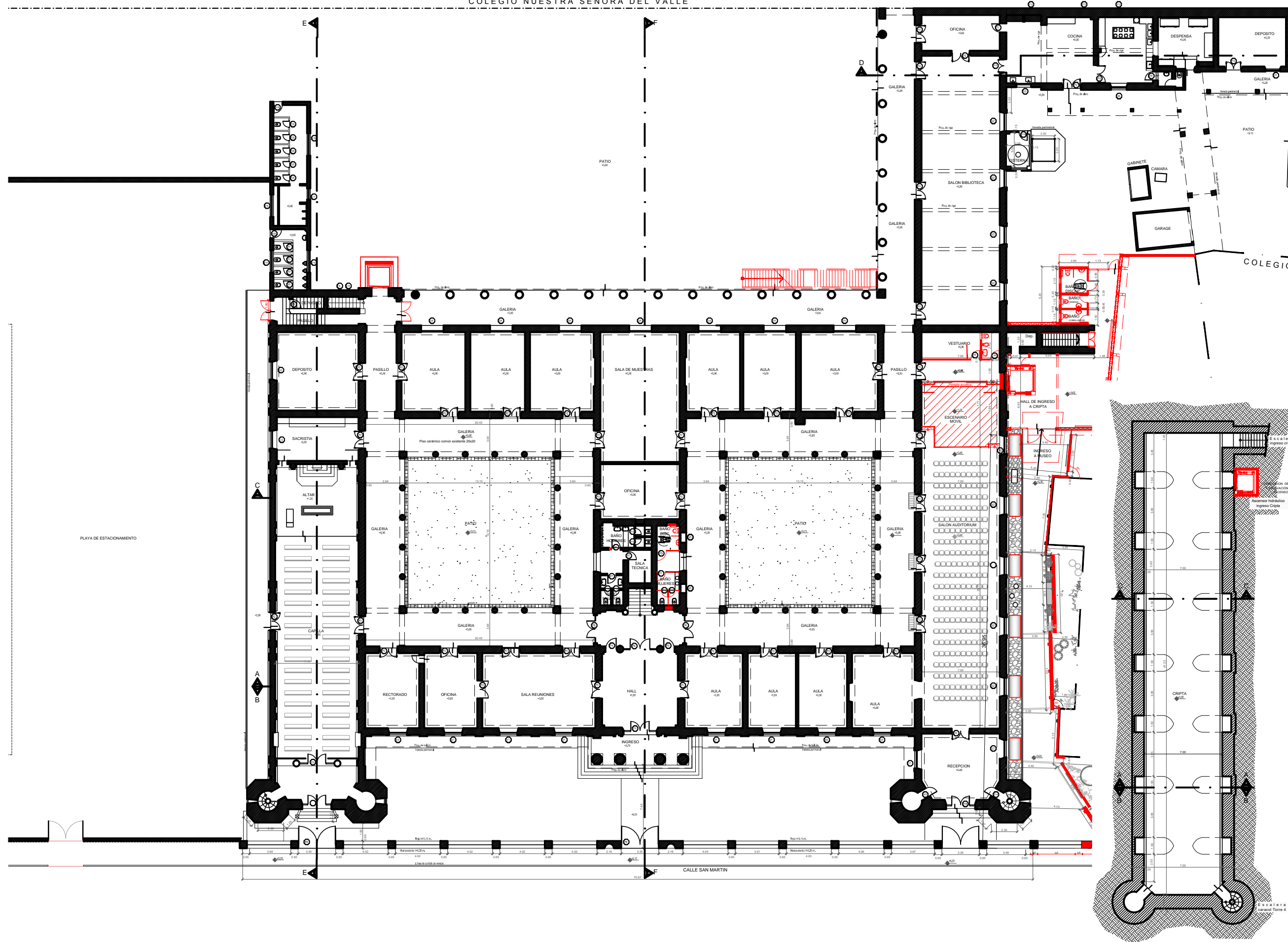
CALLE 9 DE JULIO

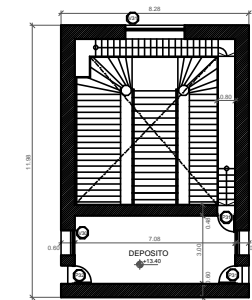
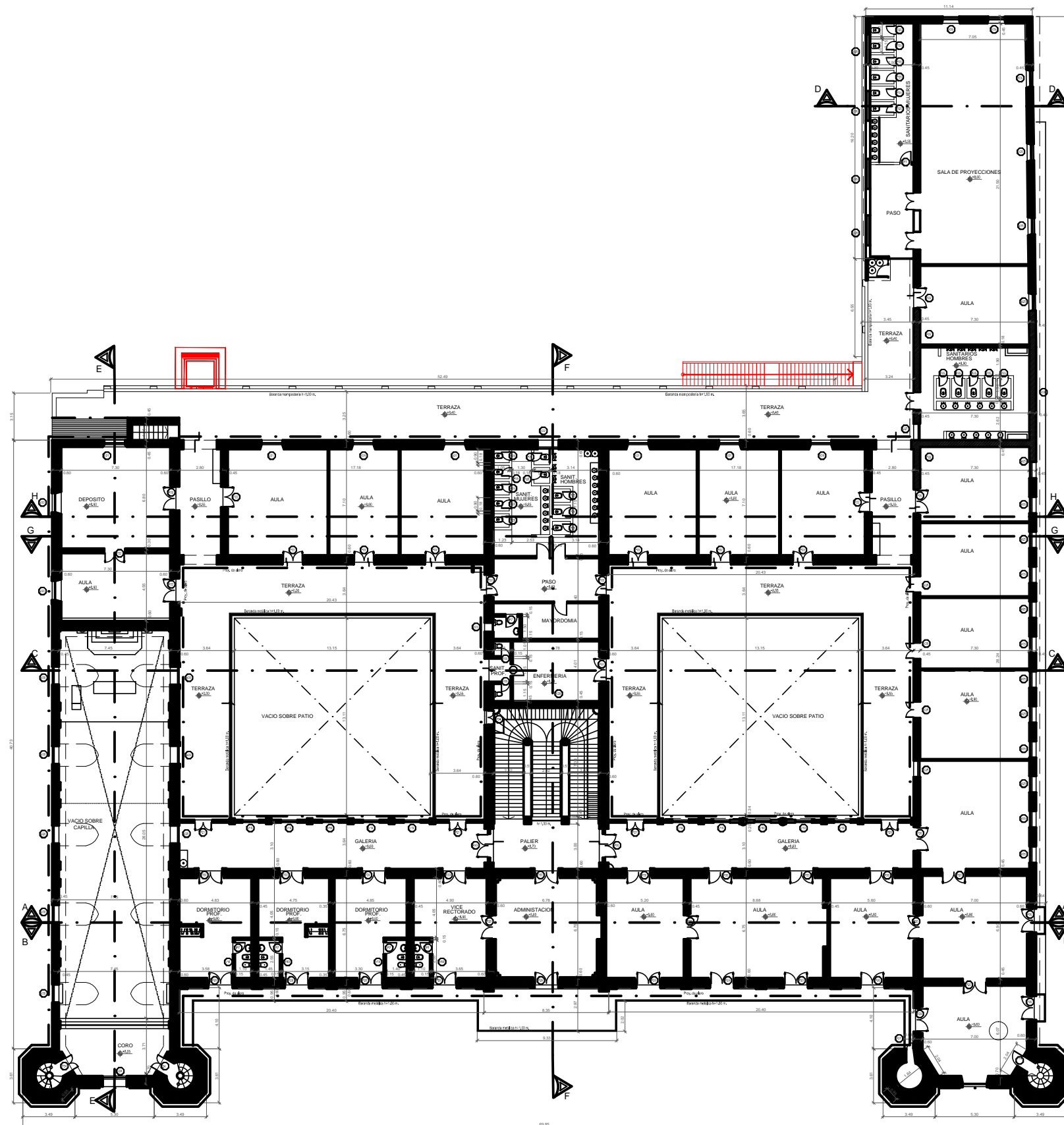
COLEGIO VIRGEN NIÑA



PLANTA GENERAL DEL CONJUNTO
Esc:1:100

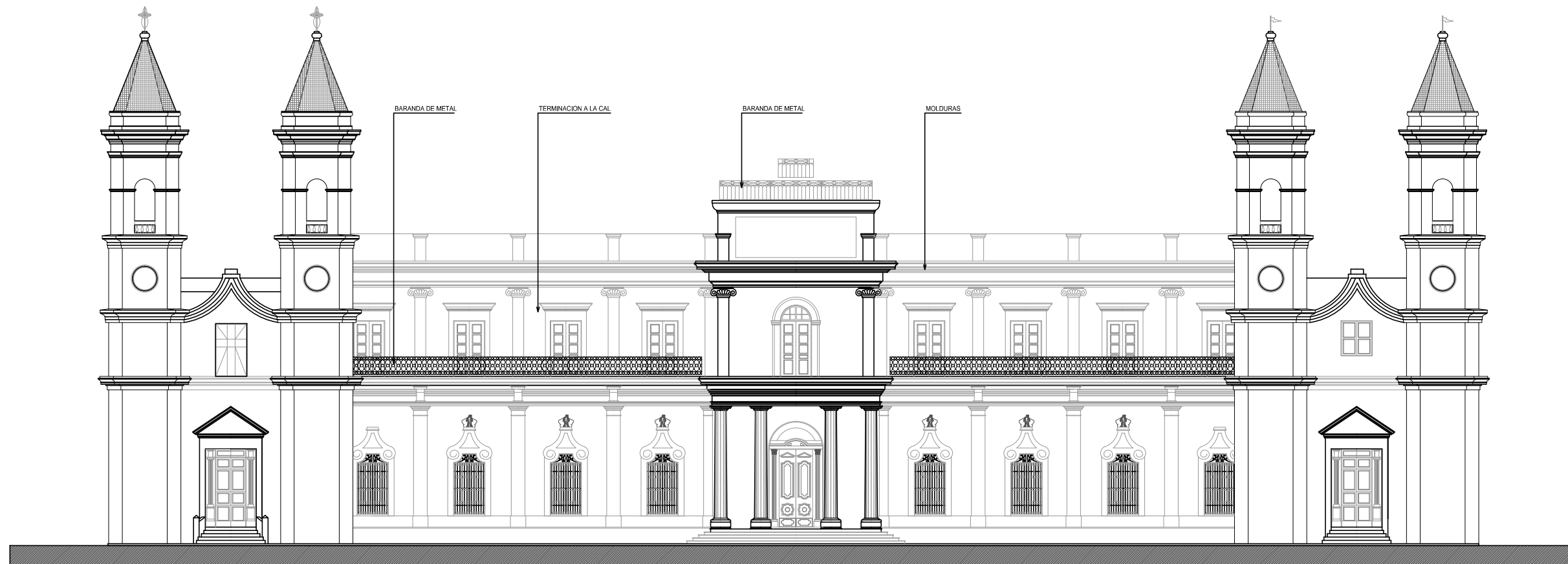
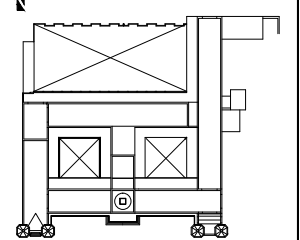
UBICACION





PLANTA AZOTEA
Esc=1:100

PLANTA ALTA
Esc=1:100



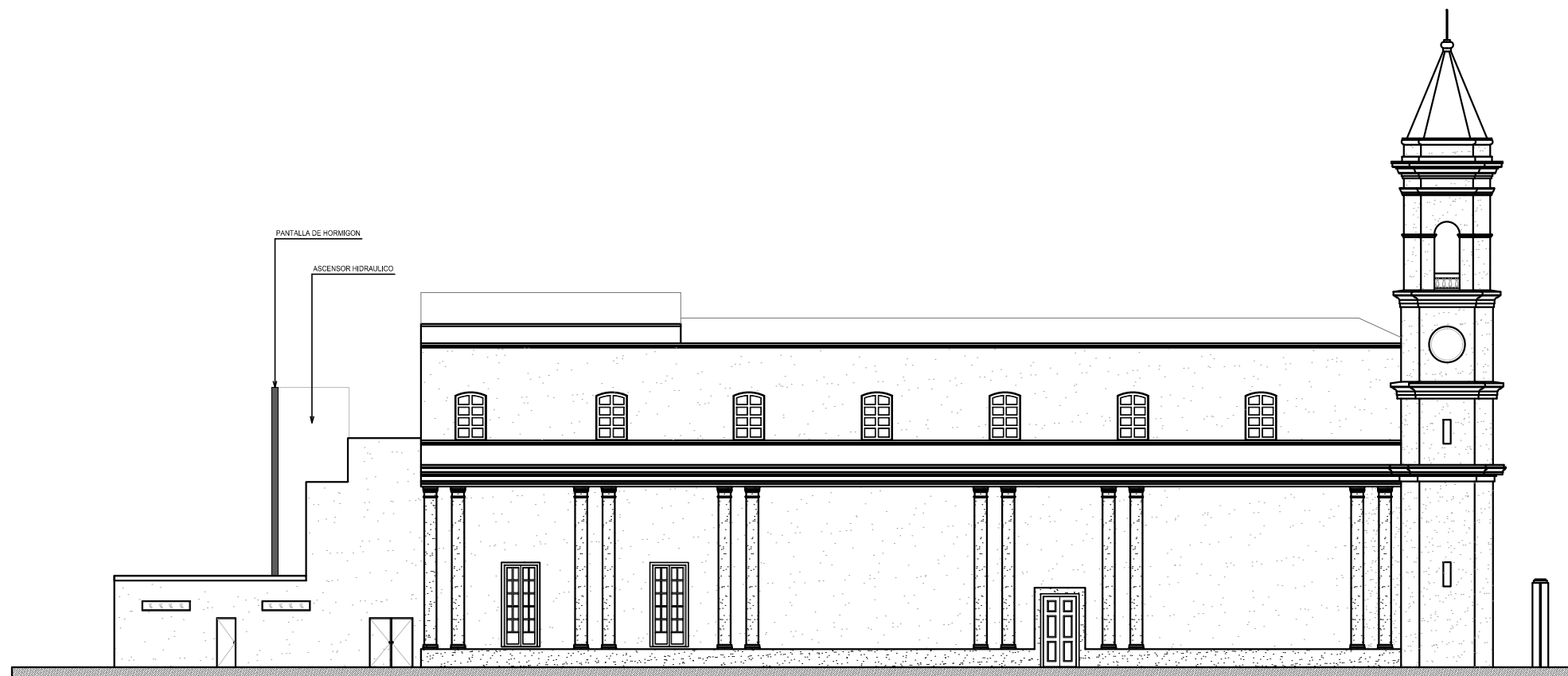
FACHADA CALLE SAN MARTIN

Esc=1:100



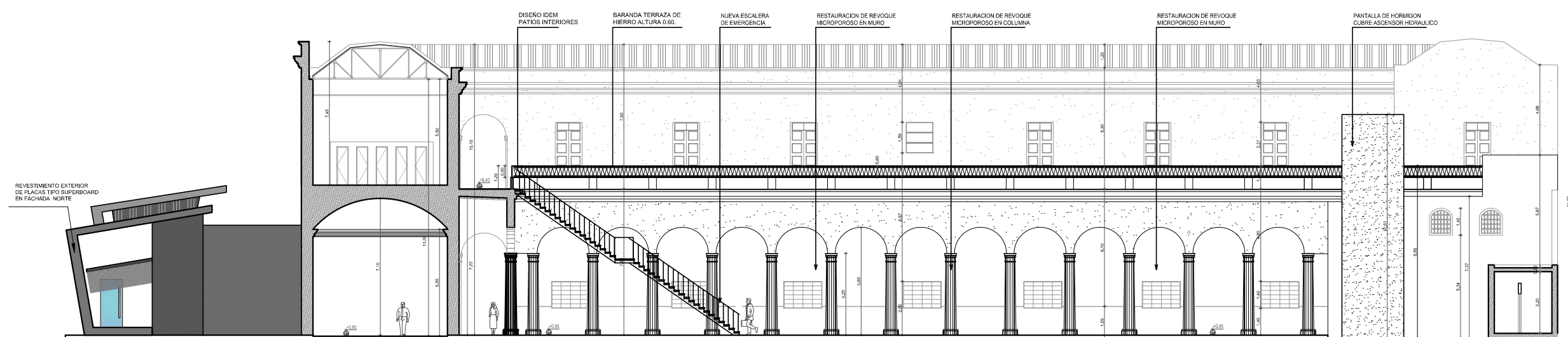
FACHADA OESTE

Esc=1:100



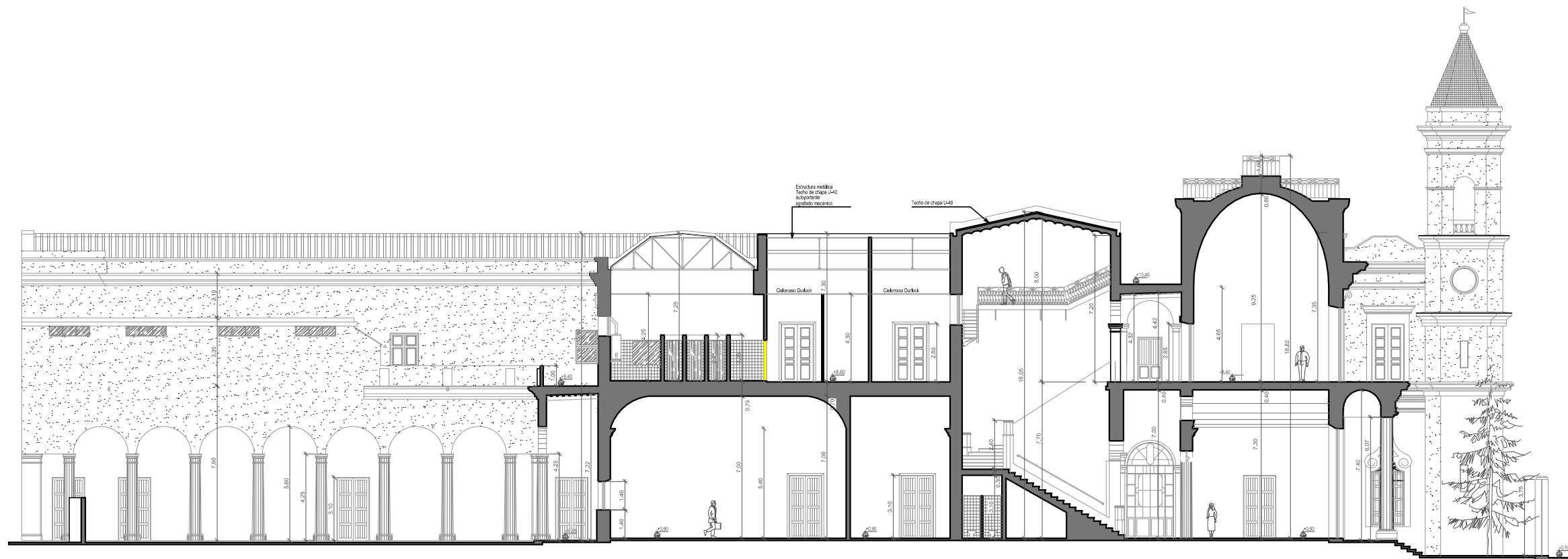
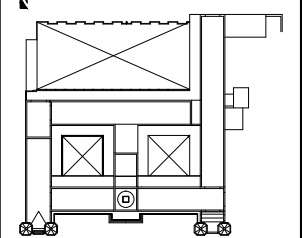
FACHADA ESTE

Esc=1:100



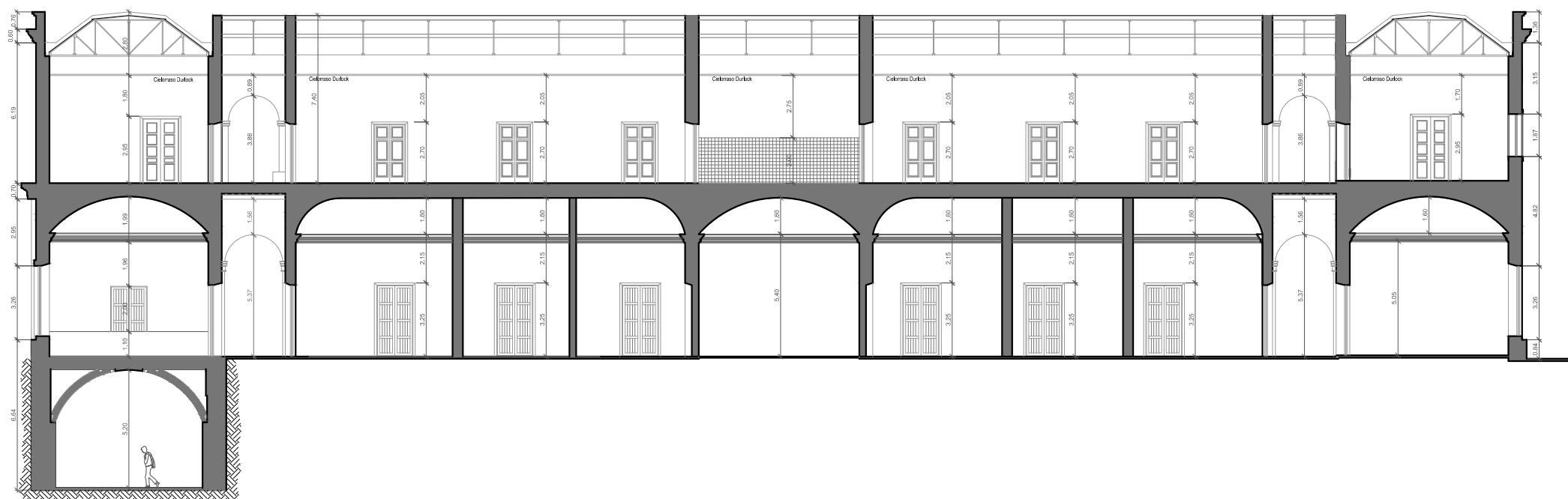
CORTE

Esc=1:100



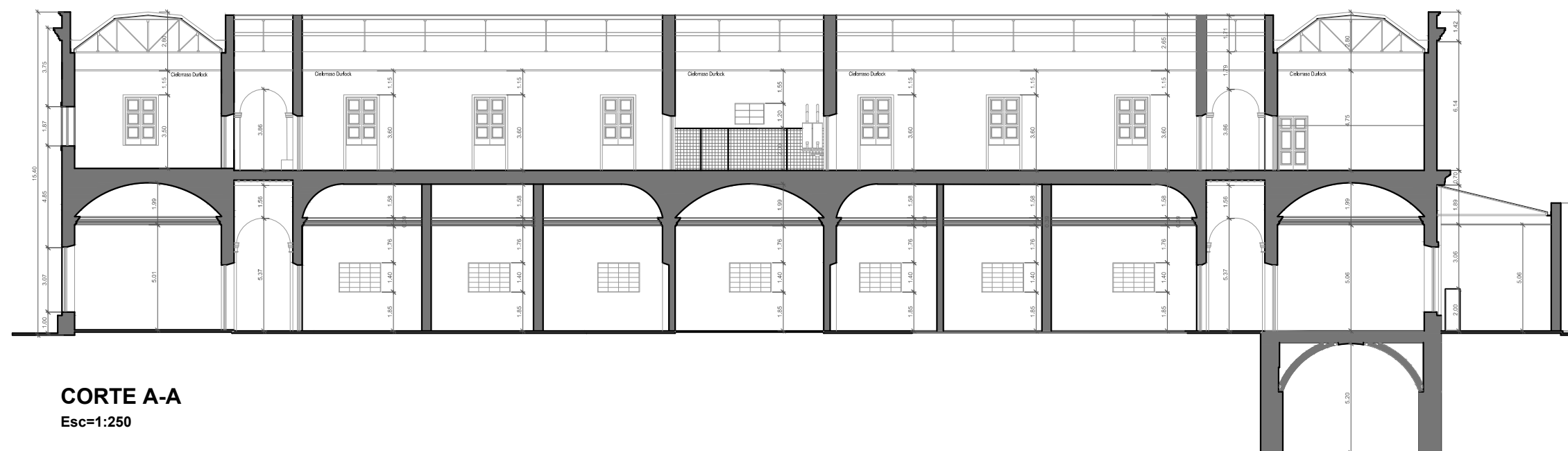
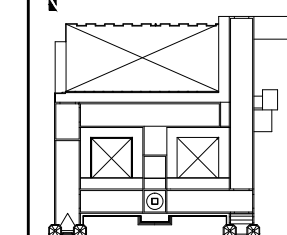
FACHADA ESTE

Esc=1:100



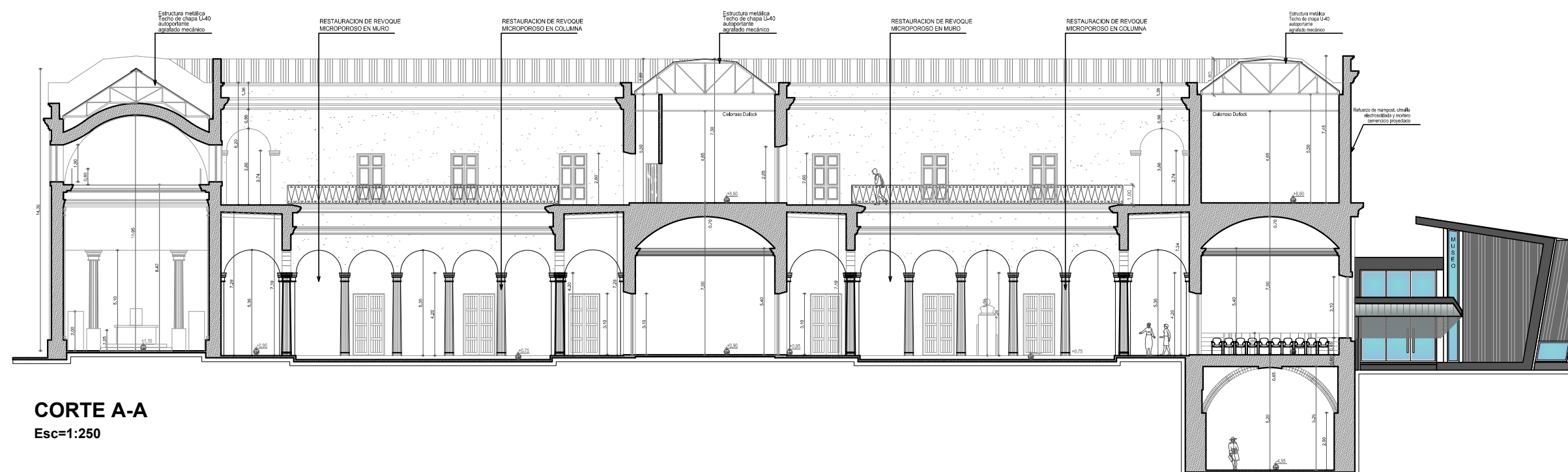
FACHADA ESTE

Esc=1:100



CORTE A-A

Esc=1:250



CORTE A-A

Esc=1:250